

HPTO System Components

Product Specification Sheet



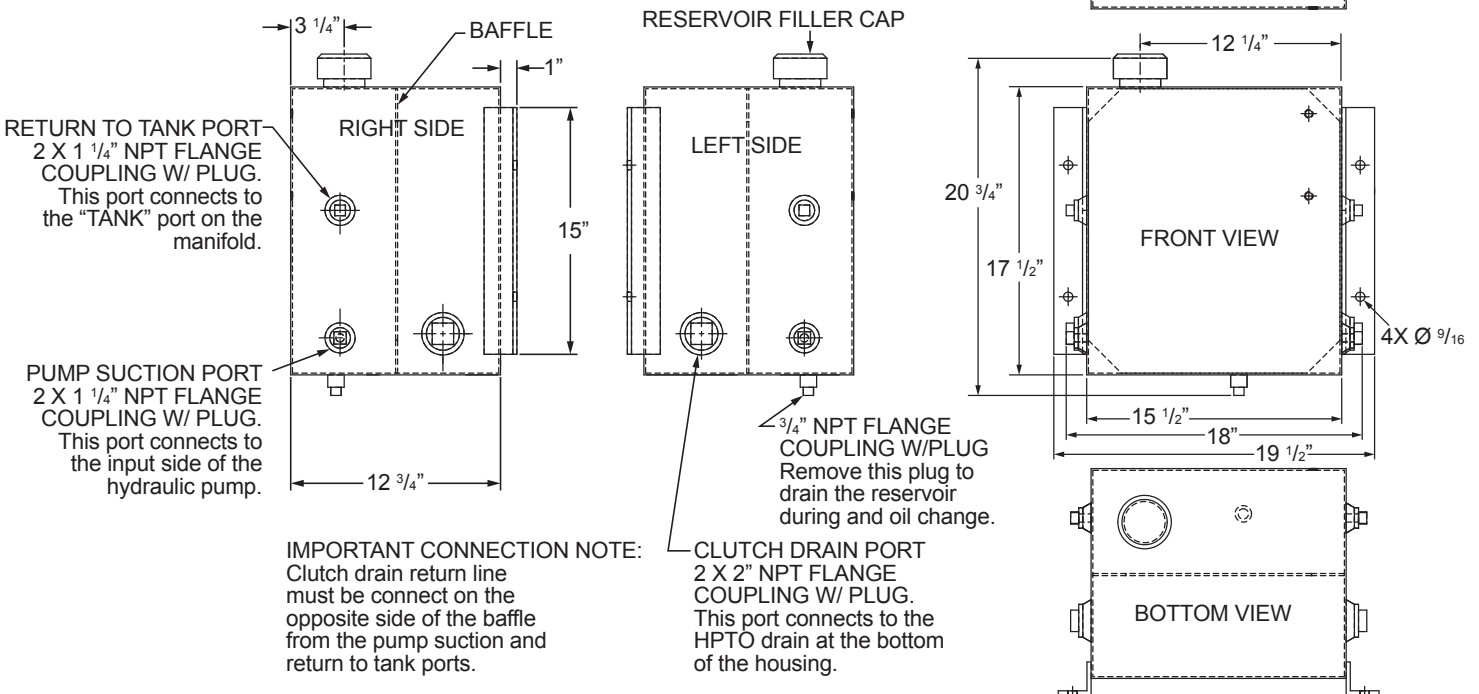
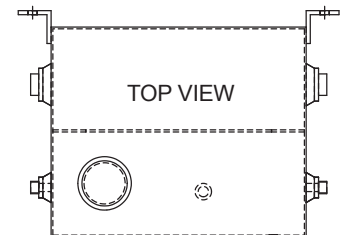
Reservoir

Reservoir

PT Tech p/n:	CHYFR-004
Manufacturer:	Sun Source
Manufacturer p/n:	SS3149
Features:	<p>Welded Steel Sheet Metal - Internal Baffle. 15-Gallon Capacity. Vented Filler Cap - screened fill tube. Visual Oil Level and Temperature Sight Gauge. Mounting holes for bolting to equipment frame. Magnetic reservoir drain plug.</p>



Reservoir Ports	Size	Location
Clutch Return Drain Port	2" NPT	Side of Reservoir towards the bottom. Opposite side of baffle from Pump Suction Port.
Pump Suction Port	1 1/4" NPT	Side of Reservoir towards the bottom. Opposite side of baffle from Clutch Drain Port.
Return to Tank Port	1 1/4" NPT	Same side of baffle as the Pump Suction Port.



Storage:

Product should be stored in a dry area that has constant temperature.

Temperature changes in the storage area can cause condensation to form inside the reservoir. This condensation causes corrosion which could compromise the structure and get into the hydraulic system.

The reservoir should be kept sealed for as long as possible. Corrosion inhibitor is applied to the inside

0-12 Months: Keep the reservoir sealed.

13-24 Months: Plug all connections air-proof. Add hydraulic oil to inside and rotate reservoir to ensure all inside surfaces are coated. Drain excess oil and re-seal.

After 24 Months: Inspect inside reservoir for signs of corrosion. If corrosion is found, replace.

Installation:

Mounting: The reservoir should be fastened to a rigid plate to prevent excessive vibration. Mounting the reservoir where the sight glass can be viewed easily is recommended. Refer to I&M for additional information.

Maintenance:

External Cleaning: Since the reservoir has a breather, using high pressure washers may force water into the tank contaminating the oil. Any corrosive substances should not be used.

Replace the filler cap as it becomes contaminated. Replace the hydraulic oil based on the clutch maintenance intervals detailed in the I&M. When changing the oil, clean the magnetic drain plug.

If a component fails in the system, the tank must be completely cleaned out to prevent re-contaminating the system.



1441 Wolf Creek Trail • P.O. Box 305
Sharon Center, OH 44274
PT Tech USA: +1 330 239 4933
sales@pttech.com • www.pttech.com

UNITED KINGDOM OFFICE
16 Atlas Rd, Hermitage Industrial Estate
Coalville, Leicestershire, LE67 3FL
PT Tech UK: +011 44 7769 159-195

PT Tech is a subsidiary of
EBO Group
Employee Owned Companies



ISO 9001:2008
with design